

MONTREAL 800MM / 1000MM / 1200MM



The Montreal bio fireplace features a manual burner, providing an efficient solution and constructed with high-grade stainless steel, it ensures durability and safety.

The manual burner allows for easy adjustment, offering a customizable and ambient experience. Ideal for modern interiors, the Montreal bio fireplace combines sleek design with functionality, seamlessly integrating into any contemporary living space.

Montreal can also be ordered with the following burners:

- Denver F6 Burner
- Hybrid Mist



Open to front



Open to front and right side



Open to front and left side



Open to front and back



Open to front, back and right

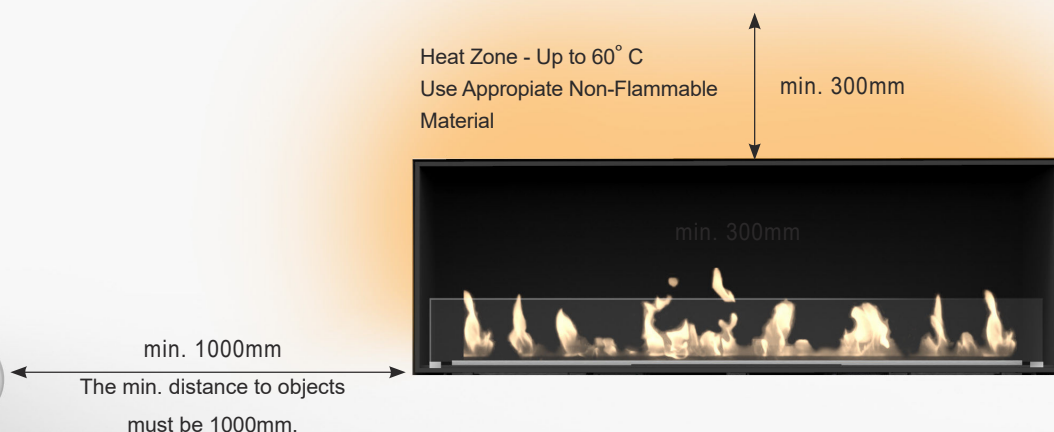


Open to front, back and left



Open to front, right and left

Heat-Zone



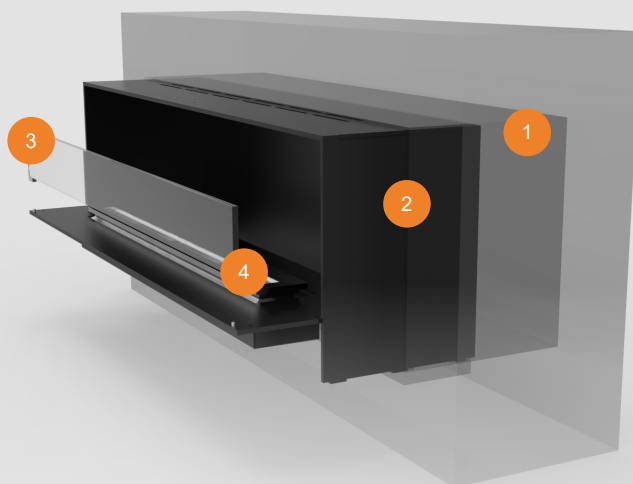
Location under TV-screen

It is NOT recommended to place TV-screens or valuable paintings over the fireplace as the rising hot air can damage the materials.
If you decide to use a construction containing a TV-screen over the bio fireplace, the following instructions must be followed, otherwise please consult your retailer or DecoFlame.



It is imperative to follow the indications in the User's Manual concerning the installation of decorative or electronic items above the fireplace.

INSTALLATION



Step 1: Make sure that the dimensions of the cut-out correspond to the measurements indicated in the technical drawing received with your fireplace. *Everything must be in level.*

Step 2: Recess the fireplace into the wall cut-out according to the indications in the User's Manual.

Step 3: Place the glass screen/s according to the indications in the User's Manual.

Step 4: Fill in the right amount of bioethanol and ignite the bioethanol with a long fireplace lighter.

The fireplace can be adjusted slightly; use the provided closure tool and push the slider either back or forward, depending on whether smaller or larger flames are desired.

Enjoy your fire.

FEATURES

- Decoflame manual brushed stainless steel burner
- 8mm aluminium casing and baseplate
- Powder-coated black fine structure
- Manually adjustable flame level
- Safety Chamber
- No chimney required

OPTIONAL

- Made-to-measure
- Glass screens
- Brushed Stainless Steel finish
- RAL colours

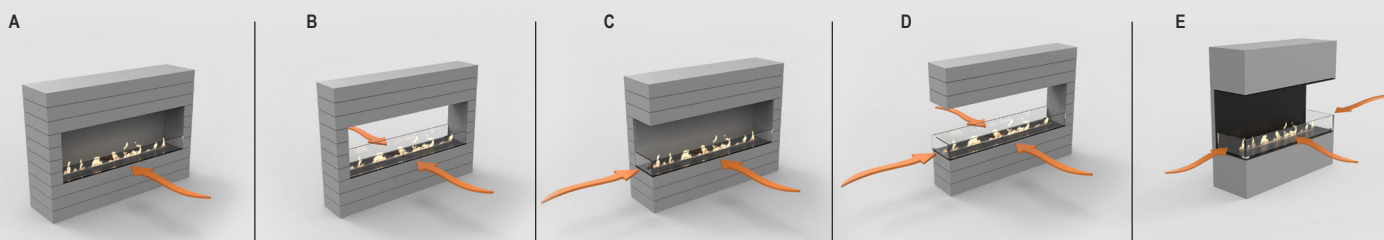
Standard finishes



Optional



Glass shield



Decoflame strongly recommends installing glass shields in order to protect the flame from draught, while keeping it vivid.

Model A comes with one low glass.

Model B comes with either two low glasses or one full glass and one low glass.

Model C - E can be ordered with low glass. We recommend it as illustrated for the best result regarding design and operation.

Burner information:

Montreal 800mm

Capacity: 2.9L
Burning time: > 7h
Heat output: 2.4-4.0 kwh
Min. room size: 48m³

Montreal 1000mm

Capacity: 3.9L
Burning time: > 7h
Heat output: 3.2-5.4 kwh
Min. room size: 64m³

Montreal 1200mm

Capacity: 4.4L
Burning time: > 7h
Heat output: 3.6-6.1 kwh
Min. room size: 72m³