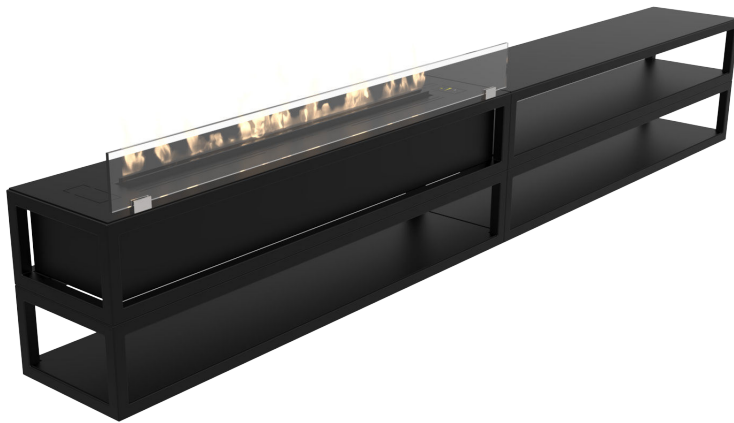


# TORINO MULTI™



Torino multi bioethanol fireplace has been designed as a hang-on-the-wall piece of furniture with clean and minimalistic lines that incorporates the automatic Denver F6 burner.

The fireplace is easy to install as it can be simply hanged anywhere in the house, adding extra shelf space and sharpness to an interior.

Moreover, it has never been easier to operate a fireplace as the burner can be controlled automatically via Decoflame App or a remote controller.

## STANDARD FINISH

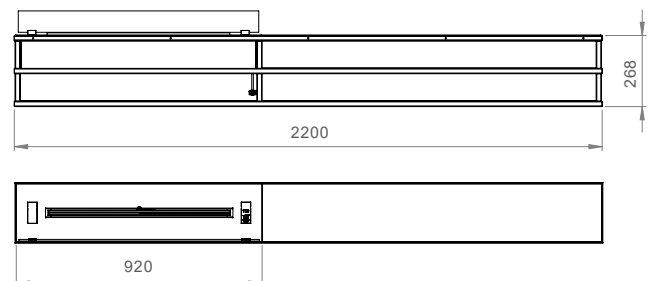
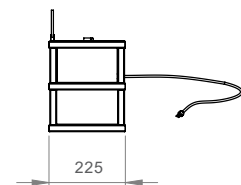


## TECHNICAL INFORMATION

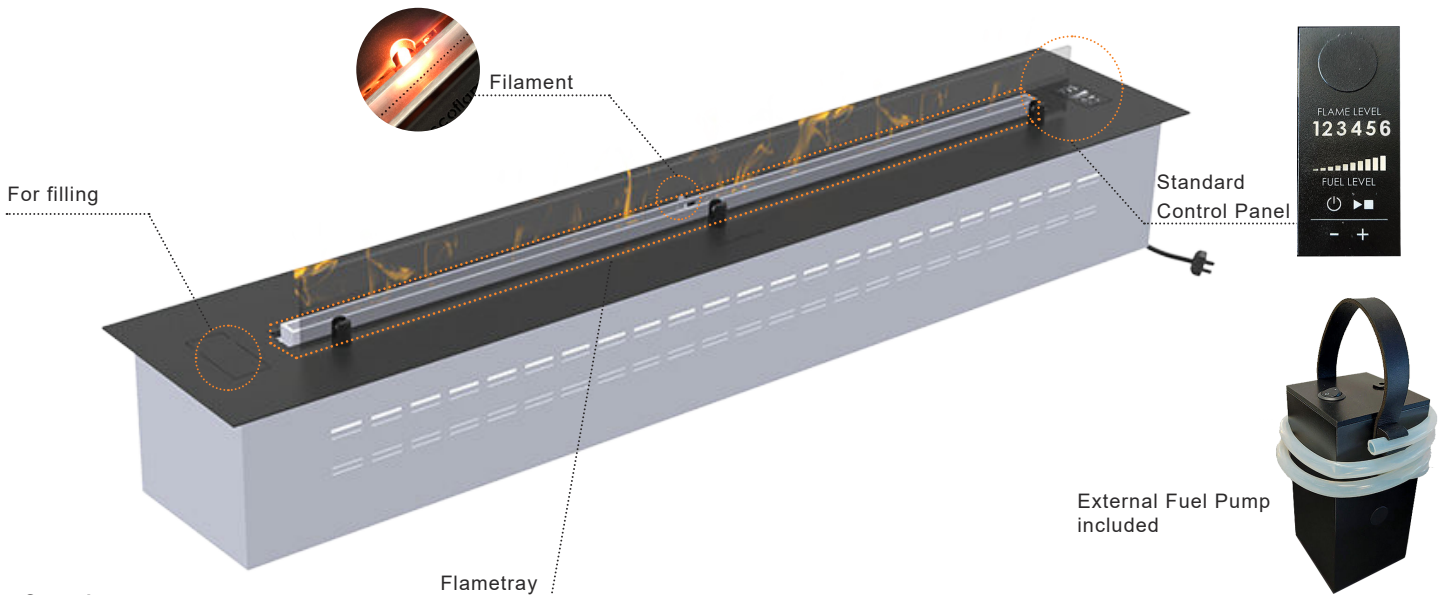
Capacity:	5,8L
Flame tray:	700mm (920 Denver F6 Burner)
Burning time:	Around 7,5 - 20,8 hours <i>Depending on flame intensity and air flow</i>
Fuel consumption:	0,4 – 0,8 l/h
Heat output:	1,6 - 4,3 kW/h
Min. room size:	89m <sup>3</sup>
Power supply:	220V – 240V – 50 Hz
Net weight:	46kg
Burner:	Automatic Denver F6 Burner
Materials:	Frame: Steel pipes Topplate: Steel 80mm high hardened glass
Finish frame:	Powder coated black or white Optional finish (RAL) on request
Topplate finish:	Black or white
Fuel:	Bioethanol at 96,5 - 97,5%

## FEATURES

- No chimney required
- No smoke, ash or soot
- Remto control included
- External Pump included
- Fuel and flame level indicator
- Bluetooth / App and 6 flame levels
- Safety sensors and safety chamber



# DENVER F6 BURNER



## Operating:

Step 1	Turn on the electronics of your Denver F6™ by pressing the  button.
Step 2	Fill in the right amount of bioethanol in the fuel tank by verifying the level on the fuel level indicator.
Step 3	To ignite the fireplace: Press the  button on the control panel. After about 3 minutes, the first flames will appear around the centre of the flame tray.
Step 4	When the filament no longer is red/glow (approx. 10 min) it is possible to adjust the flames.
Step 5	To switch off the fire at any time – also during the warming-up phase – press the  button on the control panel. The flames will disappear within few minutes.



Use the supplied remote control or download the Decoflame App to your mobile device for controlling the biofireplace.

## Installation of Decoflame App to the Denver F6 burner

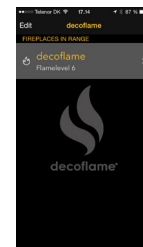


App Store



Google play

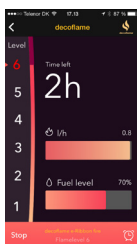
<b>Model:</b>	Denver Basic 720 - black	
<b>Dimensions:</b>	720x215x125mm - Flame Tray 500	
<b>Power Supply:</b>	220/240V - 50Hz must be earthed	
<b>Serial Number:</b>	72000.05.16.V1.001	
<b>Thermal Output:</b>	max 2.9 kW	
<b>Fuel Type:</b>	bioethanol 96%	
<b>Room Volume:</b>	min. 58 m <sup>3</sup>	
<b>Radio Frequency:</b>	433.92 MHz	
<b>Bluetooth Code:</b>	0001	
<b>Manufacturer:</b>	Decoflame ApS - Made in Denmark	



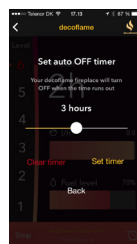
1. Download and install the Decoflame App corresponding to your smart device's operating system. For more information go to: [decoflame.com](http://decoflame.com).

2. In order to pair your fireplace with your smart device, start the fireplace by pressing the 'ON' button. Start the App and choose your fireplace. Insert the code from YOUR rating plate, like the one highlighted above.

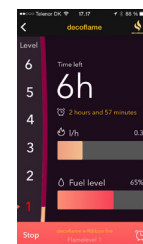
3. Once your device is paired, the fireplace should be visible on the app. You are now able to change the name of the fireplace. **Note:** You are able to pair more than one fireplace like described in the step nr. 2 and give them different names.



4. Once you have selected your fireplace, you can turn it on by pressing 'START'. If the fireplace has already been turned on using the control panel, you can now monitor the fuel level and the consumption.



5. For the 'Turn Off Timer' press the clock icon in the lower right corner. To adjust the remaining time, slide the dot to the left and right and select 'SET TIMER'. The remaining burning time can be changed by repeating the above mentioned steps. To cancel the timer select 'CLEAR TIMER'.



6. For adjusting the flame intensity, select the desired level on the left side of the screen. (1-lowest, 5+ECO Wave or 6-highest depending on the model chosen). Should there not be enough fuel for the selected burning time - the fireplace will shut down automatically. Select 'STOP' to turn off the fireplace.