

# Built-in Burner 900mm with safety chamber

## Brushed stainless steel (BSS)

### Technical Data

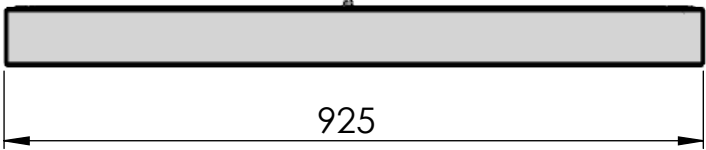
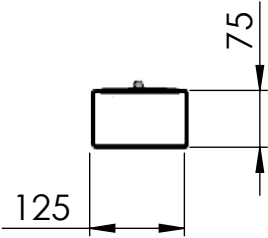
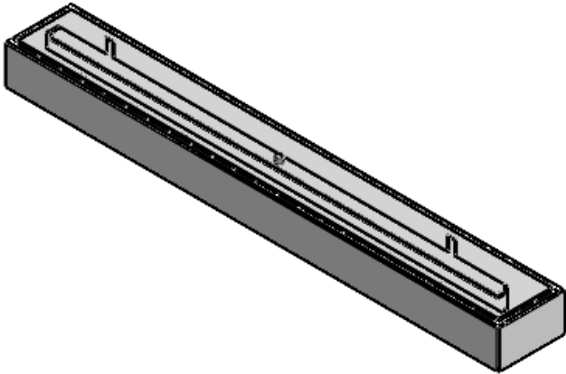
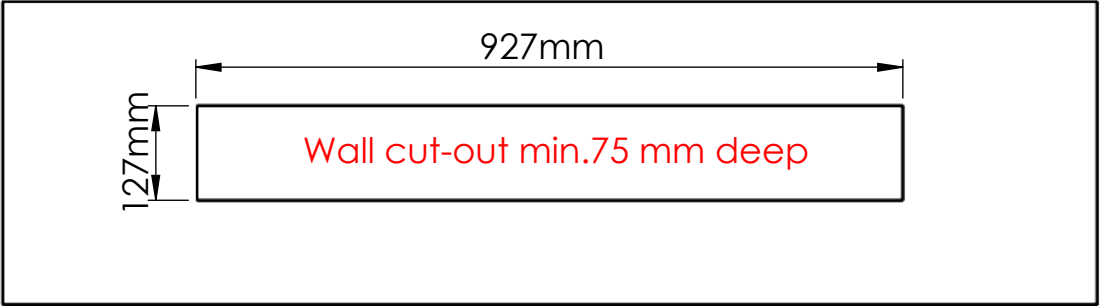
Capacity 4,2 L  
Burning time 5 -10 h  
Heat Outout 2,4 - 4,8 kw  
Net weight 12 kg.  
Finish: brushed stainless steel


### Features:

Decofame® brushed stainless steel manual burner  
Adjustable flame height  
No chimney required  
No ash, smoke or soot  
Outdoor use  
Safety chamber with lip  
Shutter tool  
3M Sponge

### Optional

Glass screen



Dimensions are in millimeters		 <div>Decoflame ApS Vang Mark 2 9380 Vestbjerg TLF: +45 96 30 48 00 www.decoflame.com</div>	<b>SCALE: 1:10</b>
REVISION:	Date		FORMAT: A3
-	07-07-2021		Page 2 OF 1
Author: TTK		Order Number - Customer - Reference: PRINCIPLE Built-in burner 900mm	
Copyright of Decoflame ApS Denmark, whose property this document remains. No part thereof may be disclosed, copied, duplicated or in any other way made use of, except with the approval of Decoflame ApS.		Customer Approval Signature - Date	